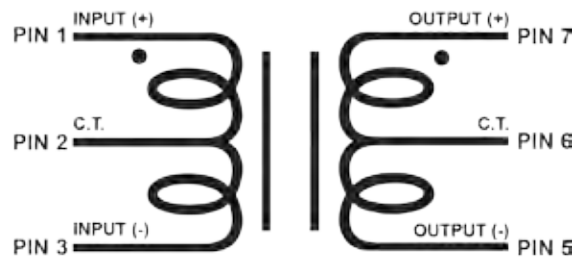
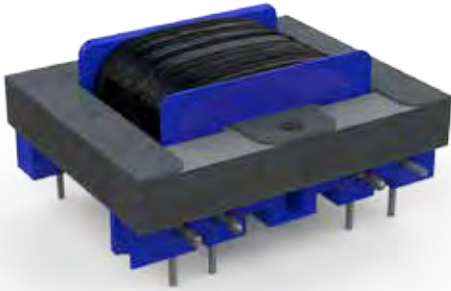


PC Series

PC MATCHER

PC10K/10K

1/4W 10K Ohms to 10K Ohms (1:1) line level matching transformer.



Design

Mathematically designed to produce a turns ratio of 1:1 for line level signals.

Primary (Input)

Designed for a balanced or unbalanced 10K Ohms line level signal.

Secondary (Output)

Designed for a balanced or unbalanced 10K Ohms line level signal.

Magnet Wire

All units are wound with the finest virgin copper magnet wire. All windings use heavy insulated wire to provide excellent manufacturing yield, lower customer cost and superior life.

The Core

EDCOR uses the finest M6 line grain oriented steel cores. Each unit is hand stacked to assure at least 92% stack.

The Bobbins

EDCOR's royal blue bobbin with black finishing tape.

Termination/Mounting

This unit is designed for printed circuit boards. For footprint and suggested hole and pad size please see the dimensional drawing.

Specifications

Wattage	0.25W
Input Maximum Voltage	5Vrms
Turns Ratio	1:1
Primary (input) Impedance	10K Ohms
Secondary (output) Impedance	10K Ohms
Frequency Response	20~20K Hz., <1dBu
THD+Noise	<0.05% @ 1K Hz.
Insertion Loss	0.5 dB
Copper Shielding	No
Bobbin Material	Glass Filled Nylon 6/6
Flamability Rating	Class B 130°C
Core Material	M6 29 ga. line grain oriented steel
Termination	8 pin PCB
Mounting	Printed circuit board mounted (PCB)
Weight	0.2 lbs.
Dimensional Drawing	15000-EI050-025-P8
Compliance	RoHS, REACH



edcorusa.com